

**Did you know....**

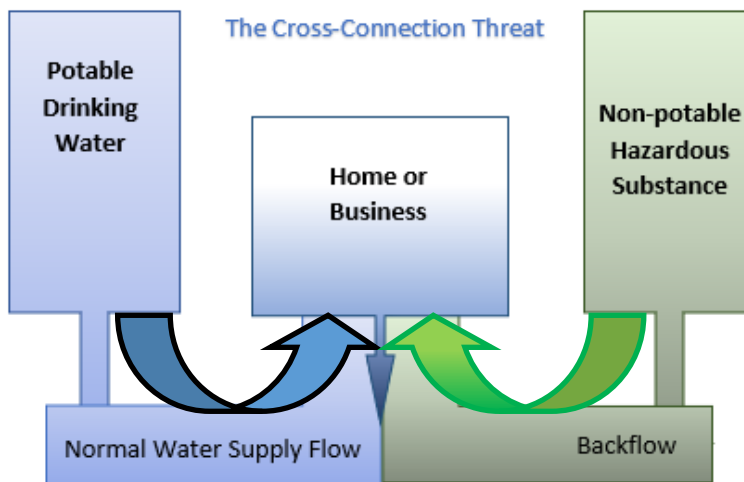
MN State Statute [4720.0025](#) and the [Minnesota Plumbing Code](#) require approved cross-connection control measures at every point of potable water connection and use.

**What is a Cross-Connection?**

A cross-connection is an actual or potential connection between the safe drinking water (potable) supply, and a source of contamination or pollution. Cross-contaminations can cause backflow, which may bring contaminants into your drinking water supply.

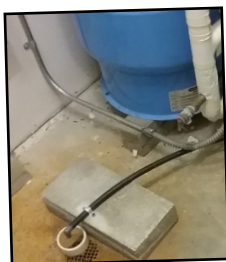
**What is Backflow?**

Water usually flows in one direction, under some conditions water may flow backwards this is called backflow.



**COMMON CROSS-CONTAMINATION SITES**

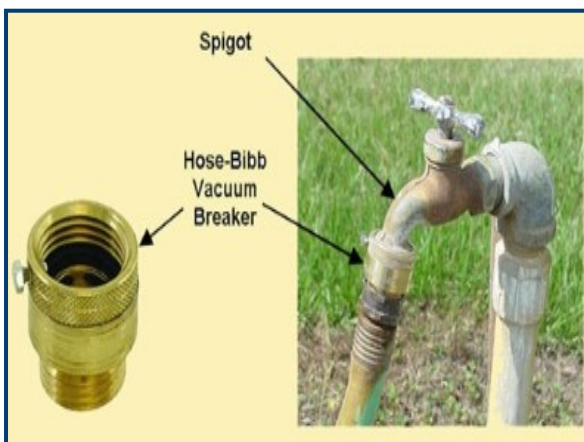
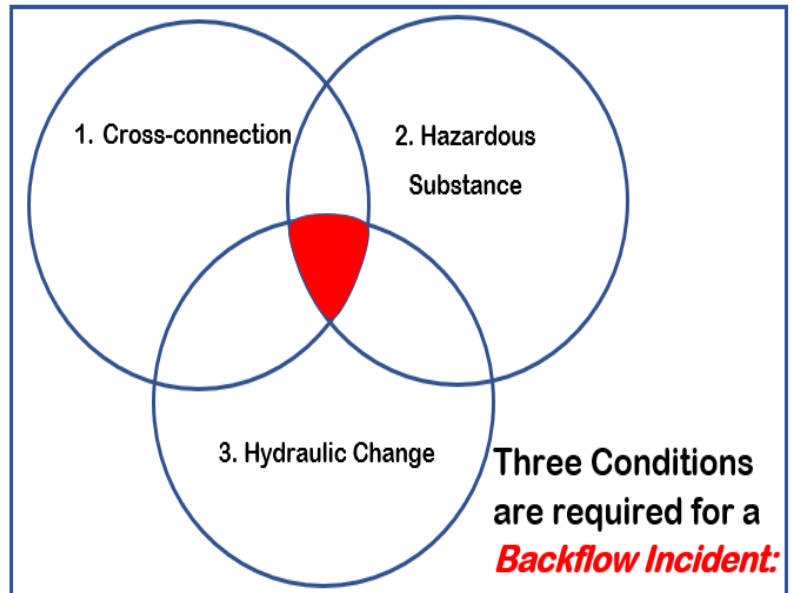
- HOSE BIBS
- BOILERS
- CLEANING/MOP STATIONS
- LAWN IRRIGATION SYSTEMS
- FIRE PROTECTION SYSTEMS
- LAB & MEDICAL EQUIPMENT
- RESTAURANT EQUIPMENT
- POWER WASHER/SPRAYERS
- WATER SOFTENER DRAINS



### Backflow Prevention Methods:

Once the degree of hazard has been determined, the proper backflow preventer can be installed. The City of Little Falls will work with Plumbing Specialists to determine the best method to use. Below are the five basic methods.

1. Air Gap
2. Atmospheric vacuum breakers, including hose connection vacuum breakers
3. Pressure-type vacuum breaker assembly (PVB)
4. Double check –valve assembly (DCVA)
5. Reduced-pressure principle backflow preventer assembly (RP or RPZ)



Many Cross-Connections can be corrected with a simple hose bibb (faucet) vacuum breaker. This means equipping each hose connection, both outside and inside, with a simple, inexpensive vacuum breaker (example left) that can be obtained at hardware stores for about \$10.00

### What can you do?

The City of Little Falls needs your cooperation in order to make this program work. By providing easy access to your home/business the City of Little Falls can evaluate and protect your drinking water safety.

Owners of the backflow prevention shall have them tested on an annual basis. Copies of the tests need to be given to the City of Little Falls.

